

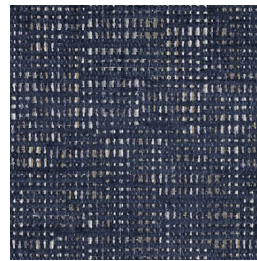
Bluemoon



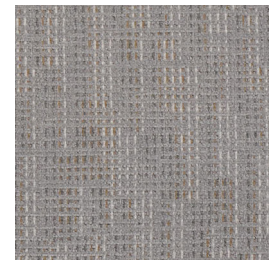
Celery



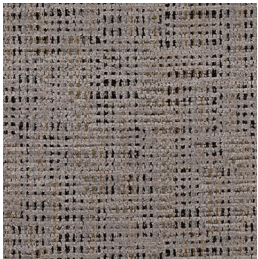
Charcoal



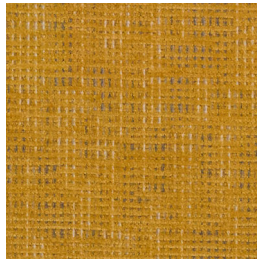
Delft



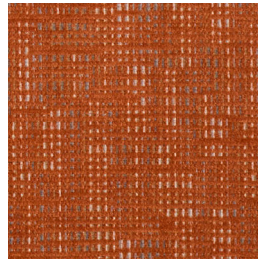
Dove



Driftwood



Gold



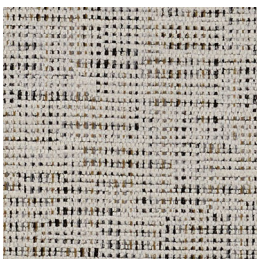
Jaffa



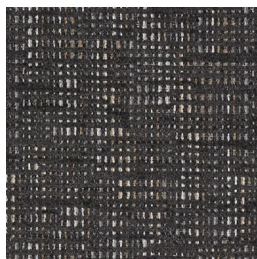
Mahogany



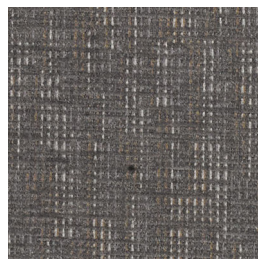
Natural



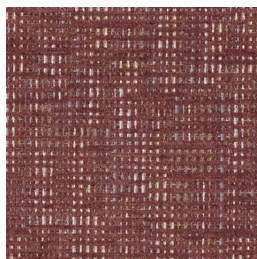
Pepper



Pewter



Steel



Woodrose

AMORE

Specifications

Usage	Heavy Domestic
Composition	100% Polyester
Pattern Repeat	Plain
Width	140cm
Railroaded	Yes
Care Label	3U
Swish	Yes
Metres on roll (approx.)	45 metres
Price Code	Green

Test Results

Abrasion resistance - Martindale (ISO 12947)	25,500 cycles
Seam slippage (ISO 13936-2, Load 180)	Warp: 5.1mm, Weft: 5.3mm
Pilling resistance (ISO 12945-2)	5
Colourfastness to light (ISO 105-B02, blue std 6)	6
Colourfastness to rubbing (ISO 105-X12:1993)	Dry: 5, Wet: 5
Free and hydrolysed formaldehyde (ISO 14184-1:1998)	37 ug/g

Fabric may vary in colour due to the nature of the media



131 Metrolink Cct, Campbellfield VIC 3061
P: +61 9357 8807
E: sales@profilefabrics.com.au
www.profilefabrics.com.au
www.swishworldfabrics.com.au

