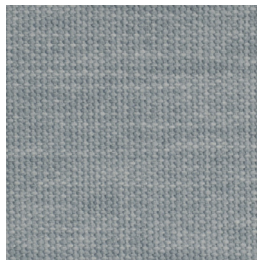


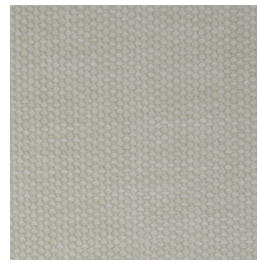
Almond



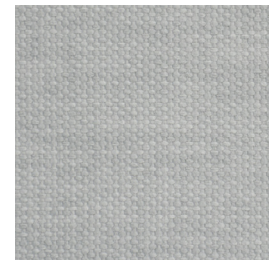
Chisel



Driftwood



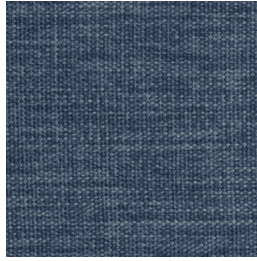
Feather



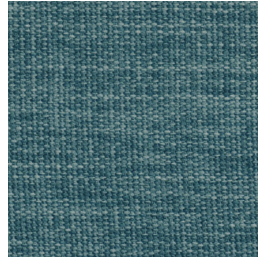
Limestone



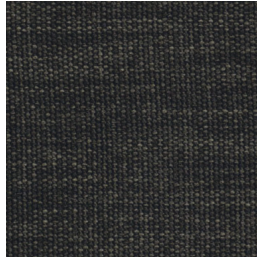
Mousse



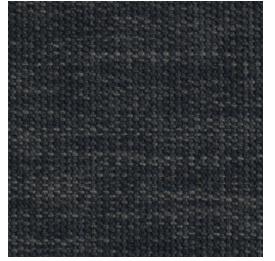
Ocean



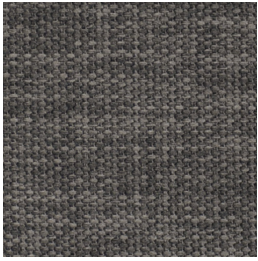
Peacock



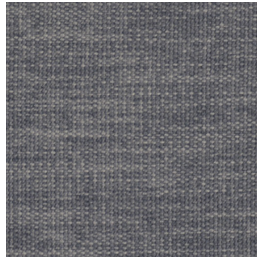
Carbon



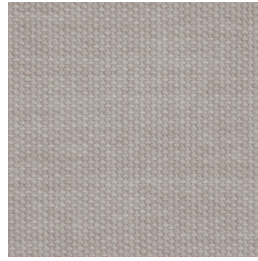
Charcoal



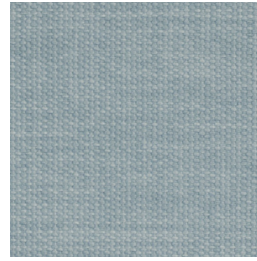
Sable



Smokebush



Pumice



Duck Egg

## BERMUDA

### Specifications

Usage	Heavy Commercial
Composition	100% Polyester
Pattern Repeat	Plain
Width	144cm
Railroaded	Yes
Care Label	3U
Swish	Yes
Metres on roll (approx.)	33 metres
Price Code	Green

### Test Results

Abrasion resistance - Martindale (ISO 12947)	61,000 cycles
Seam slippage (ISO 13936-2, Load 180)	N/A
Pilling resistance (ISO 12945-2)	4
Colourfastness to light (ISO 105-B02, blue std 6)	6
Colourfastness to rubbing (ISO 105-X12:1993)	Dry: 4-5, Wet: 4-5
Free and hydrolysed formaldehyde (ISO 14184-1:1998)	Yes

Fabric may vary in colour due to the nature of the media



131 Metrolink Cct, Campbellfield VIC 3061  
P: +61 9357 8807  
E: sales@profilefabrics.com.au  
www.profilefabrics.com.au  
www.swishworldfabrics.com.au

