

Bliss Alloy



Bliss Blush



Bliss Cabernet



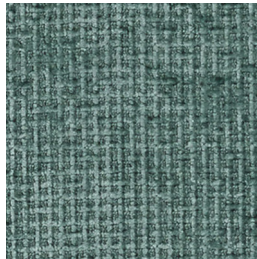
Bliss Celadon



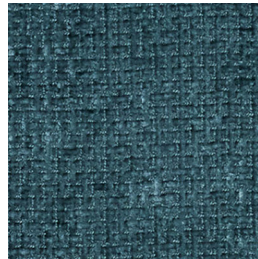
Bliss Deep Sea



Bliss Flint



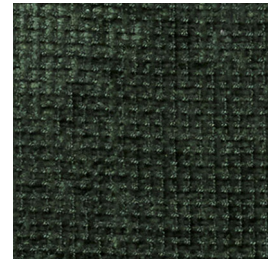
Bliss Jade



Bliss Mallard



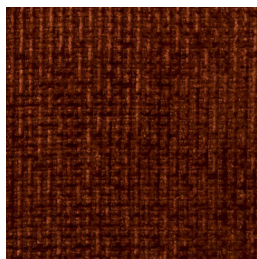
Bliss Moonstone



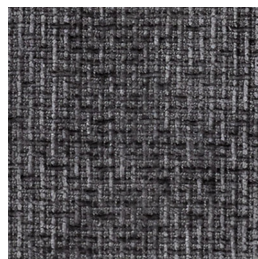
Bliss Olive



Bliss Pearl



Bliss Rustica



Bliss Shale



Bliss Smoke



Bliss Snow

## BLISS

### Specifications

Usage	Heavy Commercial
Composition	100% Polyester
Pattern Repeat	Plain
Width	140cm
Railroaded	Yes
Care Label	1U
Swish	Yes
Metres on roll (approx.)	45 metres
Price Code	Green

### Test Results

Abrasion resistance - Martindale (ISO 12947)	45,000 cycles
Seam slippage (ISO 13936-2, Load 180)	Warp: 5.7mm, Weft: 4.8mm
Pilling resistance (ISO 12945-2)	5
Colourfastness to light (ISO 105-B02, blue std 6)	Greater than 6
Colourfastness to rubbing (ISO 105-X12:1993)	Dry: 4/5, Wet: 5
Free and hydrolysed formaldehyde (ISO 14184-1:1998)	Not detectable

Fabric may vary in colour due to the nature of the media



131 Metrolink Cct, Campbellfield VIC 3061  
P: +61 9357 8807  
E: sales@profilefabrics.com.au  
www.profilefabrics.com.au  
www.swishworldfabrics.com.au

