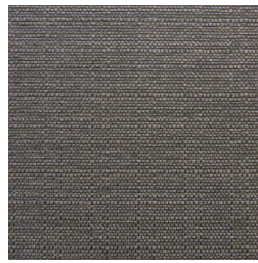
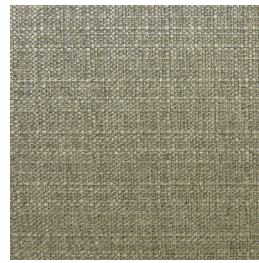


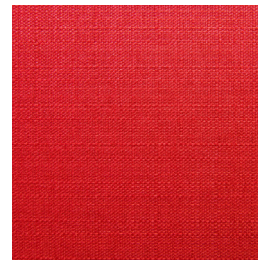
Delight Bark



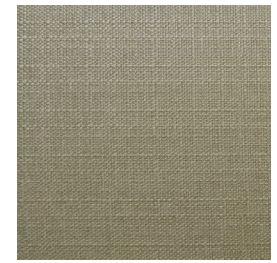
Delight Charcoal



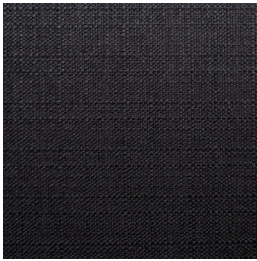
Delight Cinnamon



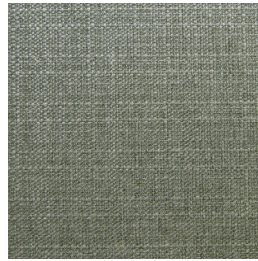
Delight Crimson



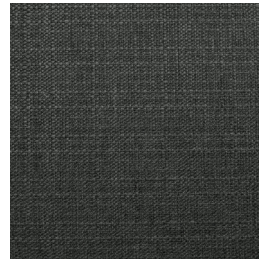
Delight Driftwood



Delight Ebony



Delight Granite



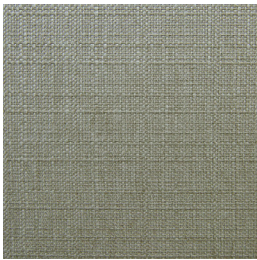
Delight Lead



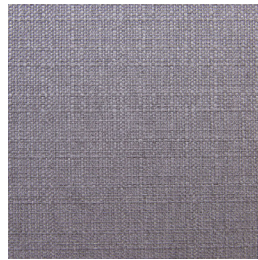
Delight Lemongrass



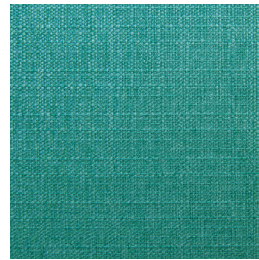
Delight Porcelain



Delight Sepia



Delight Stone



Delight Teal

## DELIGHT

### Specifications

Usage	Heavy Domestic
Composition	100% Polyester
Pattern Repeat	Plain
Width	146cm
Railroaded	Yes
Care Label	3U
Swish	Yes
Metres on roll (approx.)	45 metres
Price Code	Orange

### Test Results

Abrasion resistance - Wyzenbeek (ASTM D3597)	27,500 cycles
Seam slippage (ISO 13936-2, Load 180)	Warp: 3.0mm, Weft: 3.1mm
Pilling resistance (ISO 12945-2)	5
Colourfastness to light (ISO 105-B02, blue std 6)	6
Colourfastness to rubbing (ISO 105-X12:1993)	Dry: 5, Wet: 5
Free and hydrolysed formaldehyde (ISO 14184-1:1998)	Not detectable

Fabric may vary in colour due to the nature of the media



30 Merola Way, Campbellfield VIC 3061  
P: +61 9357 8807 F: +61 9357 9907  
E: sales@profilefabrics.com.au  
www.profilefabrics.com.au  
www.swishworldfabrics.com.au

