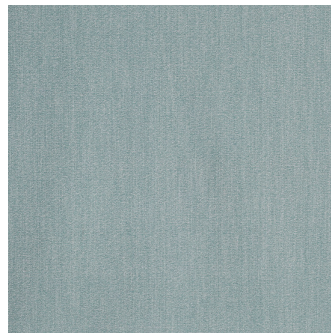
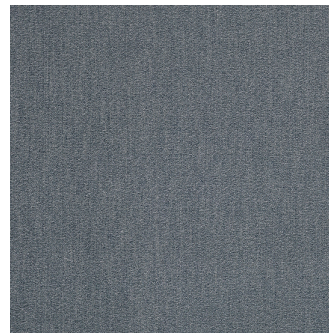


Greenmore Caviar



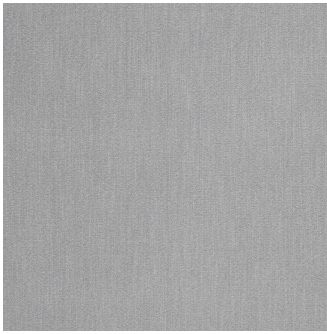
Greenmore Duck Egg



Greenmore Lake



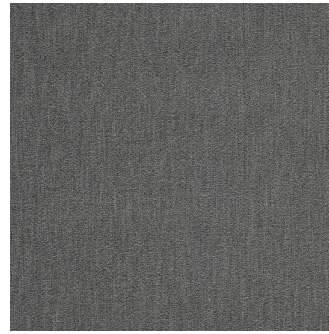
Greenmore Mink



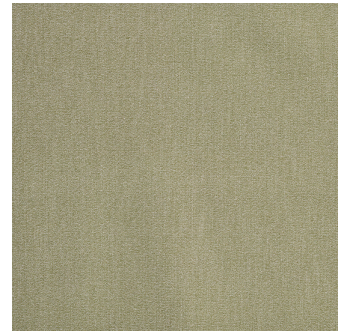
Greenmore Mist



Greenmore Pebble



Greenmore Timber



Greenmore Willow

## GREENMORE (Greenacre Collection)

### Specifications

Usage	Heavy Commercial
Composition	100% Polyester
Pattern Repeat	Plain
Width	140cm
Railroaded	Yes
Care Label	3U
Swish	Yes
Metres on roll (approx.)	45 metres
Price Code	Yellow

### Test Results

Abrasion resistance - Martindale (ISO 12947)	45,000 cycles
Seam slippage (ISO 13936-2, Load 180)	Warp: 4.6mm, Weft: 4.4mm
Pilling resistance (ISO 12945-2)	5
Colourfastness to light (ISO 105-B02, blue std 6)	Greater than 6
Colourfastness to rubbing (ISO 105-X12:1993)	Dry: 5, Wet: 5
Free and hydrolysed formaldehyde (ISO 14184-1:1998)	Not detectable

Fabric may vary in colour due to the nature of the media



30 Merola Way, Campbellfield VIC 3061  
P: +61 9357 8807 F: +61 9357 9907  
E: sales@profilefabrics.com.au  
www.profilefabrics.com.au  
www.swishworldfabrics.com.au

