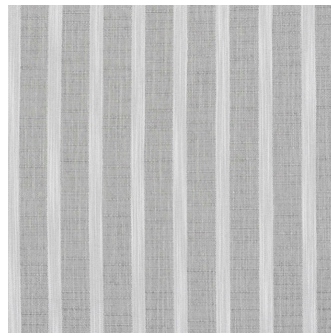
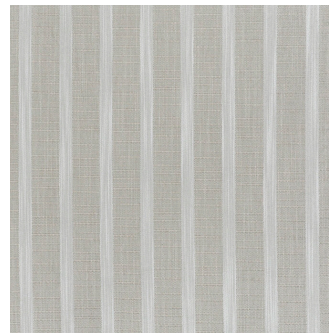


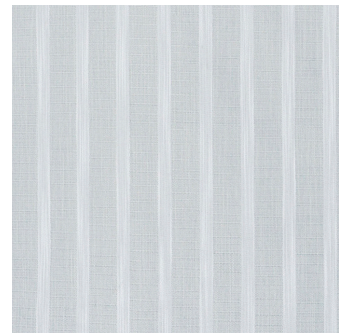
Hillcrest Aqua



Hillcrest Haze



Hillcrest Parchment



Hillcrest Sterling

HILLCREST (Hatfield Collection)

Specifications

Usage	General Domestic
Composition	100% Polyester
Pattern Repeat	V:Stripe x H:5.4cm
Width	152cm
Railroaded	Yes
Care Label	3U
Swish	Yes
Metres on roll (approx.)	45 metres
Price Code	Green

Test Results

Abrasion resistance - Wyzenbeek (ASTM D3597)	25,000 cycles
Seam slippage (ISO 13936-2, Load 180)	Warp: 5.3mm, Weft: 4.2mm
Pilling resistance (ISO 12945-2)	4/5
Colourfastness to light (ISO 105-B02, blue std 6)	Greater than 6
Colourfastness to rubbing (ISO 105-X12:1993)	Dry: 5, Wet: 5
Free and hydrolysed formaldehyde (ISO 14184-1:1998)	Not detectable

Fabric may vary in colour due to the nature of the media



30 Merola Way, Campbellfield VIC 3061
P: +61 9357 8807 F: +61 9357 9907
E: sales@profilefabrics.com.au
www.profilefabrics.com.au
www.swishworldfabrics.com.au

