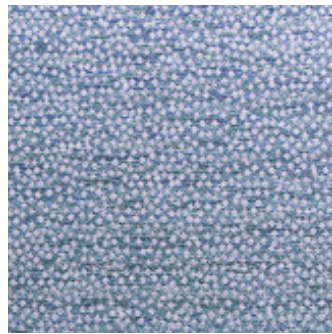
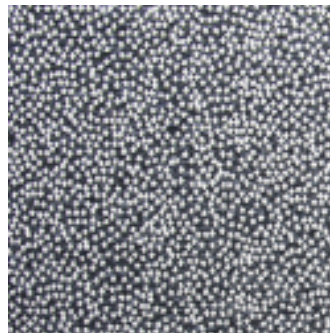


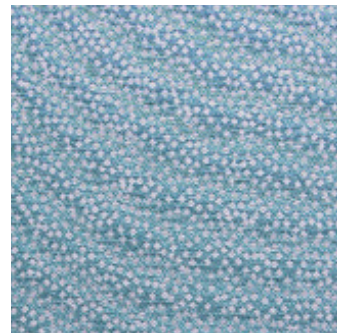
Hot Spot Beige



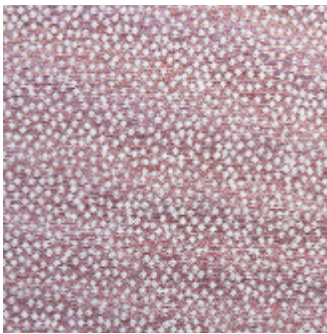
Hot Spot Cameo



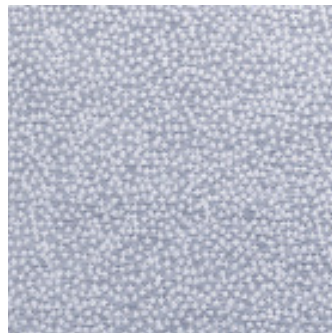
Hot Spot Caviar



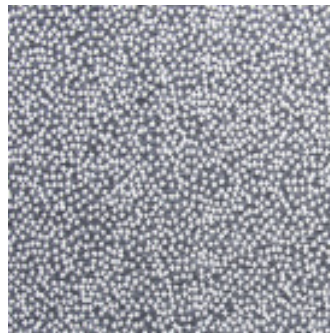
Hot Spot Mint



Hot Spot Musk



Hot Spot Pewter



Hot Spot Slate



Hot Spot Sunflower

HOT SPOT (Hooper Collection)

Specifications

Usage	General Domestic
Composition	100% Polyester
Pattern Repeat	Multi
Width	142cm
Railroaded	Yes
Care Label	3U
Swish	Yes
Metres on roll (approx.)	45 metres
Price Code	Yellow

Test Results

Abrasion resistance - Martindale (ISO 12947)	15,000 cycles
Abrasion resistance - Wyzenbeek (ASTM D3597)	9,000 cycles
Seam slippage (ISO 13936-2, Load 180)	Warp: 3.0mm, Weft: 2.9mm
Pilling resistance (ISO 12945-2)	5
Colourfastness to light (ISO 105-B02, blue std 6)	Greater than 6
Colourfastness to rubbing (ISO 105-X12:1993)	Dry: 5, Wet: 5
Free and hydrolysed formaldehyde (ISO 14184-1:1998)	Not detectable

Fabric may vary in colour due to the nature of the media



131 Metrolink Cct, Campbellfield VIC 3061
P: +61 9357 8807
E: sales@profilefabrics.com.au
www.profilefabrics.com.au
www.swishworldfabrics.com.au

