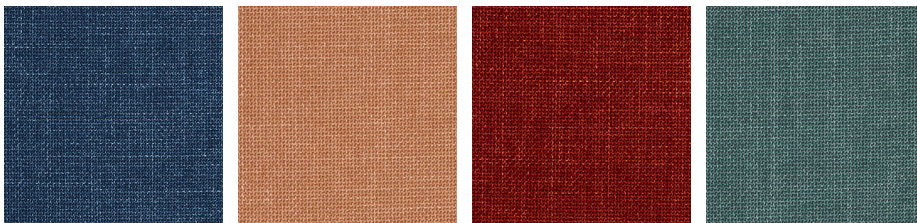


Ash Carbon Cement Cloud Coral Honey



Jasper Lagoon Marble Marine Mint Nickel



Ocean Peach Salsa Teal

## MAGNUM

### Specifications

Usage	Heavy Commercial
Composition	100% Polyester
Pattern Repeat	Plain
Width	140cm
Railroaded	Yes
Care Label	3U
Swish	Yes
Metres on roll (approx.)	45 metres
Price Code	Yellow

### Test Results

Abrasion resistance - Martindale (ISO 12947)	150,000 cycles
Seam slippage (ISO 13936-2, Load 180)	Warp: 2.4mm, Weft: 2.5mm
Pilling resistance (ISO 12945-2)	5
Colourfastness to light (ISO 105-B02, blue std 6)	6
Colourfastness to rubbing (ISO 105-X12:1993)	Dry: 5, Wet: 5
Free and hydrolysed formaldehyde (ISO 14184-1:1998)	Not detectable
Dimensional change - laundering (ISO 6330.7AA, 40C)	Warp: -0.7, Weft: -0.6

Fabric may vary in colour due to the nature of the media



131 Metrolink Cct, Campbellfield VIC 3061  
 P: +61 9357 8807  
 E: sales@profilefabrics.com.au  
 www.profilefabrics.com.au  
 www.swishworldfabrics.com.au

