



Maine Beige



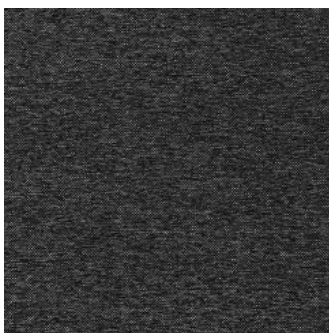
Maine Cameo



Maine Pewter



Maine Royal



Maine Slate

MAINE (Mandalay Collection)

Specifications

Usage	Heavy Commercial
Composition	100% Polyester
Pattern Repeat	Plain
Width	142cm
Railroaded	Yes
Care Label	3U
Swish	Yes
Metres on roll (approx.)	45 metres
Price Code	Yellow

Test Results

Abrasion resistance - Martindale (ISO 12947)	45,000 cycles
Abrasion resistance - Wyzenbeek (ASTM D3597)	40,000 cycles
Seam slippage (ISO 13936-2, Load 180)	Warp: 3.8mm, Weft: 2.2mm
Pilling resistance (ISO 12945-2)	5
Colourfastness to light (ISO 105-B02, blue std 6)	Greater than 6
Colourfastness to rubbing (ISO 105-X12:1993)	Dry: 5, Wet: 5
Free and hydrolysed formaldehyde (ISO 14184-1:1998)	Not detectable

Fabric may vary in colour due to the nature of the media



131 Metrolink Cct, Campbellfield VIC 3061
P: +61 9357 8807
E: sales@profilefabrics.com.au
www.profilefabrics.com.au
www.swishworldfabrics.com.au

