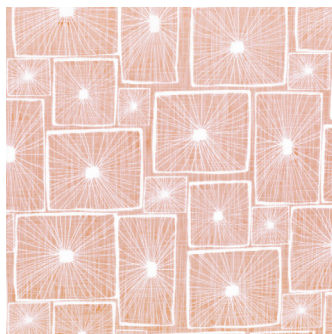
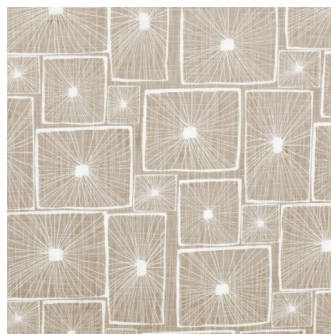


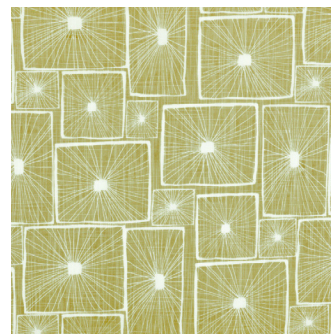
Norway Azure



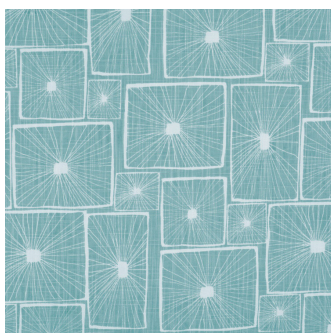
Norway Blush



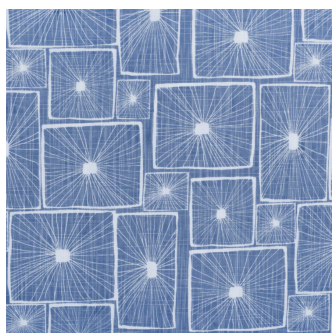
Norway Flax



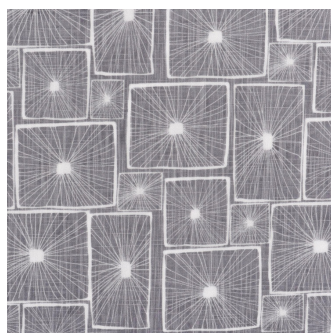
Norway Harvest



Norway Mist



Norway Powder Blue



Norway Silver

## NORWAY

### Specifications

Usage	General Domestic / Drapery
Composition	54% Cotton, 46% Polyester
Pattern Repeat	V:31.3cm x H:35cm
Width	140cm
Railroaded	No
Care Label	3U
Swish	No
Metres on roll (approx.)	45 metres
Price Code	Blue / Black

### Test Results

Abrasion resistance - Wyzenbeek (ASTM D3597)	100,000 cycles
Seam slippage (ISO 13936-2, Load 180)	Warp: 3.2mm, Weft: 2.5mm
Pilling resistance (ISO 12945-2)	5
Colourfastness to light (ISO 105-B02, blue std 6)	Greater than 6
Colourfastness to rubbing (ISO 105-X12:1993)	Dry: 4/5, Wet: 3/4
Free and hydrolysed formaldehyde (ISO 14184-1:1998)	Not detectable

Fabric may vary in colour due to the nature of the media