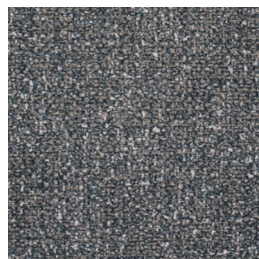
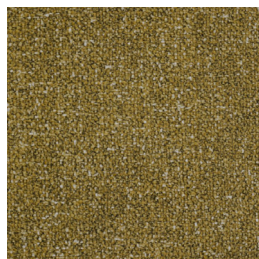




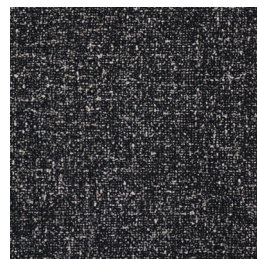
Randwick Fern



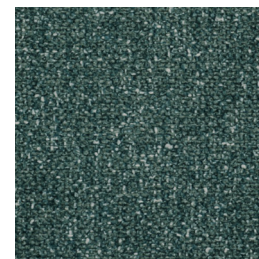
Randwick Flint



Randwick Gold



Randwick Granite



Randwick Hedge



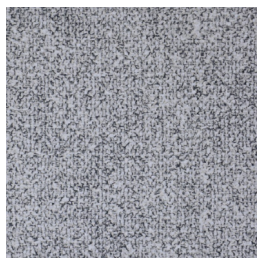
Randwick Nutmeg



Randwick Rust



Randwick Shell



Randwick Stone



Randwick Toffee

RANDWICK

Specifications

Usage	Heavy Commerical
Composition	100% Polyester
Pattern Repeat	Plain
Width	140cm
Railroaded	Yes
Care Label	1U
Swish	Yes
Metres on roll (approx.)	40 metres
Price Code	Yellow

Test Results

Abrasion resistance - Martindale (ISO 12947)	89,000 cycles
Seam slippage (ISO 13936-2, Load 180)	Warp: 1.1mm, Weft: 1.6mm
Pilling resistance (ISO 12945-2)	4-5
Colourfastness to light (ISO 105-B02, blue std 6)	4-5
Colourfastness to rubbing (ISO 105-X12:1993)	Dry: 4/5, Wet: 4/5
Free and hydrolysed formaldehyde (ISO 14184-1:1998)	Not detectable

Fabric may vary in colour due to the nature of the media



30 Merola Way, Campbellfield VIC 3061
P: +61 9357 8807 F: +61 9357 9907
E: sales@profilefabrics.com.au
www.profilefabrics.com.au
www.swishworldfabrics.com.au

