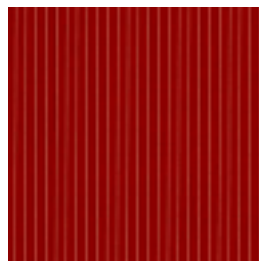
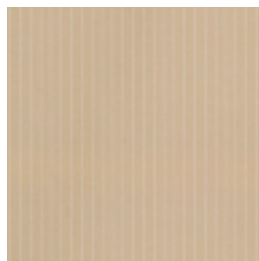


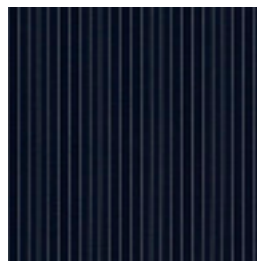
Aqua



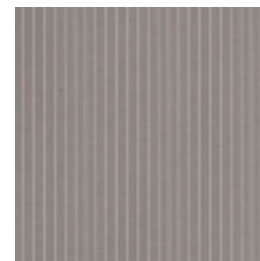
Fiesta



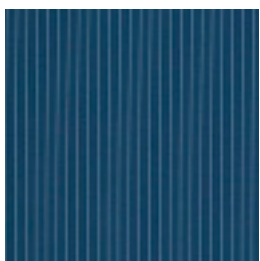
Latte



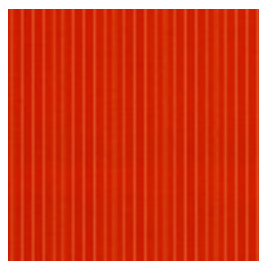
Navy



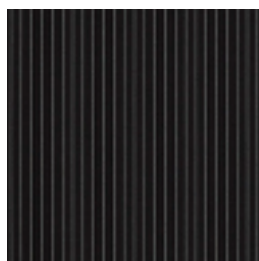
Platinum



Riveria



Tango



Volcano



Willow

## SEVILLE ('SOL'utions Andalusia Collection)

### Specifications

Usage	Heavy Domestic Indoor/Outdoor/Draperly
Composition	100% Polyester Solution Dyed
Pattern Repeat	V:Stripe x H:0.08cm
Width	140cm
Railroaded	No
Care Label	SOL F/4
Swish	Yes
Water Resistant	Yes
Metres on roll (approx.)	35 metres
Price Code	Green

### Test Results

Abrasion resistance - Martindale (ISO 12947)	31,000 cycles
Abrasion resistance - Wyzenbeek (ASTM D3597)	100,000 cycles
Seam slippage (ISO 13936-2, Load 180)	Warp: 5.0mm, Weft: 4.3mm
Pilling resistance (ISO 12945-2)	5
Colourfastness to light (ISO 105-B02, blue std 6)	Greater than 7
Colourfastness to dry cleaning (ISO 105-D01:1993)	Colour change: 5, Staining solvent: 5
Colourfastness to water (ISO 105-E01)	Colour change: 5, Staining multifibre: 5, Self: 5

Fabric may vary in colour due to the nature of the media



131 Metrolink Circuit  
Campbellfield, Victoria 3061  
+61 9357 8807  
sales@profilefabrics.com.au  
www.profilefabrics.com.au  
www.swishworldfabrics.com.au



# SEVILLE ('SOL'utions Andalusia Collection)

## Test Results

Colourfastness to shampoo (AS2111.19.2)	Colour change: 5, Staining Multifibre: 5, Self: 5
Colourfastness to rubbing (ISO 105-X12)	Dry: 5, Wet: 5
Colourfastness to perspiration, alkaline (ISO 105-E04)	Colour change: 5, Staining Multifibre: 5, Self: 5
Colourfastness to washing (ISO 105-C06, B1S)	Colour change: 5, Staining Multifibre: 5, Self: 5
Colourfastness to sea water (ISO 105-E02)	Colour change: 5, Staining Multifibre: 5, Self: 5
Colourfastness to chlorinated water (ISO 105-E03m 50mg/L)	Colour change: 5
Dimensional change - laundering (ISO 6330.7BA)	Dimensional chg (%) Warp: -0.4, Weft: -0.3
Dimensional change due to hanging (AS2663.1.B-1997)	Dimensional chg (%) Warp: +0.4, Weft: +0.4
Free and hydrolysed formaldehyde (ISO 14184-1:1998)	Not detectable
Colour change after bleaching and hot water extraction	Colour change: 5



131 Metrolink Circuit  
Campbellfield, Victoria 3061  
+61 9357 8807  
sales@profilefabrics.com.au  
www.profilefabrics.com.au  
www.swishworldfabrics.com.au

