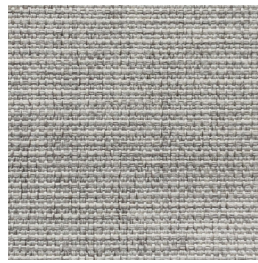
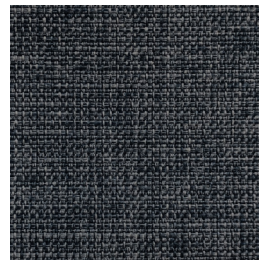


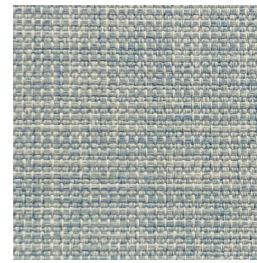
Almond



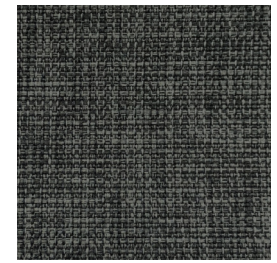
Chalk



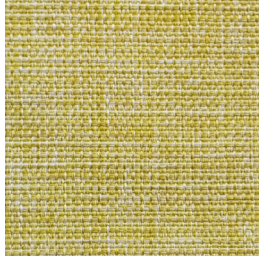
Denim



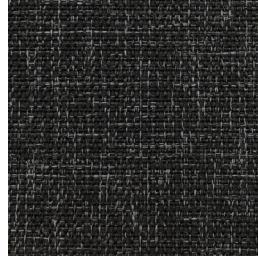
Frost



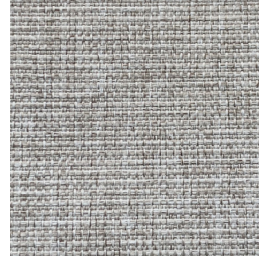
Lead



Lemoncello



Noir



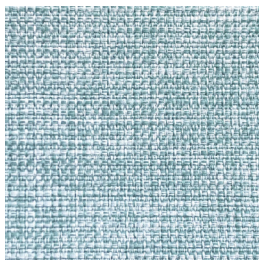
Oatmeal



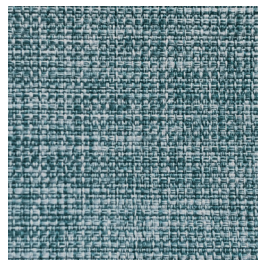
Organic



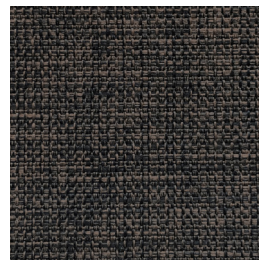
Raisin



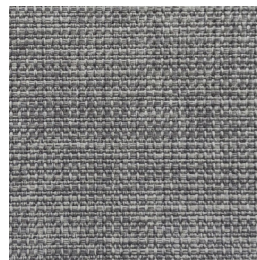
Seafoam



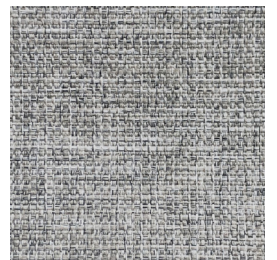
Teal



Trestle



Warm Grey



White Ash

STAMFORD

Specifications

Usage	Heavy Commercial
Composition	100% Polyester
Pattern Repeat	Plain
Width	150cm
Railroaded	Yes
Care Label	3U
Swish	Yes
Metres on roll (approx.)	45 metres
Price Code	Orange
Fire Rated AS1530.3 Tested	Yes

Test Results

Abrasion resistance - Wyzenbeek (ASTM D3597)	76,500 cycles
Seam slippage (ISO 13936-2, Load 180)	Warp: 4.0mm, Weft: 5.7mm
Pilling resistance (ISO 12945-2)	5
Colourfastness to light (ISO 105-B02, blue std 6)	Greater than 6
Colourfastness to rubbing (ISO 105-X12:1993)	Dry: 5, Wet: 5
Free and hydrolysed formaldehyde (ISO 14184-1:1998)	Not detectable

Fabric may vary in colour due to the nature of the media



131 Metrolink Cct, Campbellfield VIC 3061
P: +61 9357 8807
E: sales@profilefabrics.com.au
www.profilefabrics.com.au
www.swishworldfabrics.com.au



STAMFORD

Fire Rating AS1530.3 Results

Ignition Time	Standard Error: 0.22, Mean: 11.29 min
Flame Propagation Time	Standard Error: Nil, Mean: Nil sec
Heat Release Integral	Standard Error: 0.7, Mean: 56.5 kJ/m2
Smoke Release, log d	Standard Error: 0.0262, Mean: -0.8538
Optical Density, d	Mean: 0.1412 / Metre
Number of Specimens Tested and Ignited	6

Regulatory Indices:

Ignitability Index	9 (Range 0-20)
Spread of Flame Index	0 (Range 0-10)
Heat Evolved Index	2 (Range 0-10)
Smoke Developed Index	5 (Range 0-10)



131 Metrolink Cct, Campbellfield VIC 3061
P: +61 9357 8807
E: sales@profilefabrics.com.au
www.profilefabrics.com.au
www.swishworldfabrics.com.au

