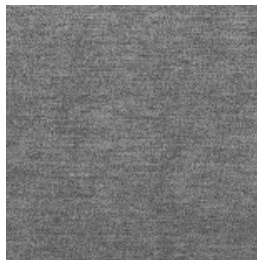




Cloud



Flint



Forest



Gunmetal



Iris



Leaf



Lightning



Marine



Sandstone



Storm



Titanium

THUNDER

Specifications

Usage	Heavy Commercial
Composition	90% Polyester, 10% Nylon
Pattern Repeat	Plain
Width	140cm
Railroaded	Yes
Care Label	1U
Swish	Yes
Metres on roll (approx.)	45 metres
Price Code	Yellow
Fire Rated AS1530.3 Tested	Yes

Test Results

Abrasion resistance - Martindale (ISO 12947)	30,000 cycles
Abrasion resistance - Wyzenbeek (ASTM D3597)	100,000 cycles
Seam slippage (ISO 13936-2, Load 180)	Warp: 3.8mm, Weft: 3.5mm
Pilling resistance (ISO 12945-2)	5
Colourfastness to light (ISO 105-B02, blue std 6)	5/6
Colourfastness to rubbing (ISO 105-X12:1993)	Dry: 5, Wet: 5
Free and hydrolysed formaldehyde (ISO 14184-1:1998)	Not detectable

Fabric may vary in colour due to the nature of the media



131 Metrolink Cct, Campbellfield VIC 3061
P: +61 9357 8807
E: sales@profilefabrics.com.au
www.profilefabrics.com.au
www.swishworldfabrics.com.au



THUNDER

Fire Rating AS1530.3 Results

Ignition Time	Standard Error: 0.13, Mean: 9.15 min
Flame Propagation Time	Standard Error: Nil, Mean: Nil sec
Heat Release Integral	Standard Error: 2.5, Mean: 45.3 kJ/m2
Smoke Release, log d	Standard Error: 0.0435, Mean: -1.1412
Optical Density, d	Mean: 0.0739 / Metre
Number of Specimens Tested and Ignited	6
Regulatory Indices:	
Ignitability Index	11 (Range 0-20)
Spread of Flame Index	0 (Range 0-10)
Heat Evolved Index	1 (Range 0-10)
Smoke Developed Index	4 (Range 0-10)



131 Metrolink Cct, Campbellfield VIC 3061
P: +61 9357 8807
E: sales@profilefabrics.com.au
www.profilefabrics.com.au
www.swishworldfabrics.com.au

