



Tinto Alpine



Tinto Capri



Tinto Gold



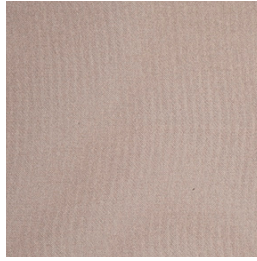
Tinto Indigo



Tinto Jade



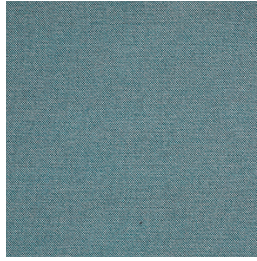
Tinto Jet



Tinto Mink



Tinto Navy



Tinto Peacock



Tinto Pewter



Tinto Salsa



Tinto Sky



Tinto Willow



Tinto Woodrose

TINTO

Specifications

Usage	Heavy Commercial
Composition	100% Polyester
Pattern Repeat	Plain
Width	150cm
Railroaded	Yes
Care Label	3U
Swish	Yes
Metres on roll (approx.)	45 metres
Price Code	Green

Test Results

Abrasion resistance - Martindale (ISO 12947)	55,000 cycles
Seam slippage (ISO 13936-2, Load 180)	Warp: 4.5mm, Weft: 5.0mm
Pilling resistance (ISO 12945-2)	4-5
Colourfastness to light (ISO 105-B02, blue std 6)	Greater than 6
Colourfastness to rubbing (ISO 105-X12:1993)	Dry: 4-5, Wet: 4-5
Free and hydrolysed formaldehyde (ISO 14184-1:1998)	Not detectable

Fabric may vary in colour due to the nature of the media



131 Metrolink Cct, Campbellfield VIC 3061
P: +61 9357 8807
E: sales@profilefabrics.com.au
www.profilefabrics.com.au
www.swishworldfabrics.com.au

