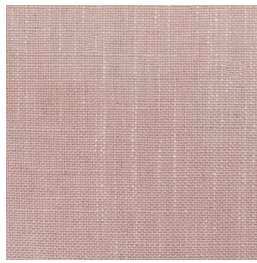




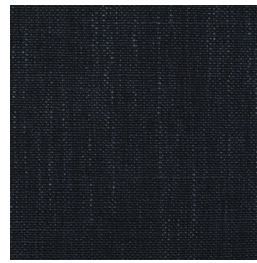
Trinity Azure



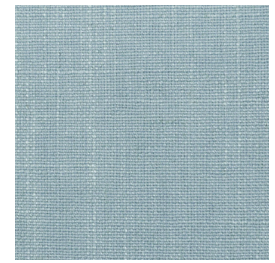
Trinity Blush



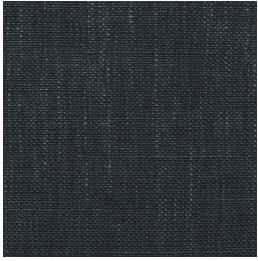
Trinity Chambray



Trinity Charcoal



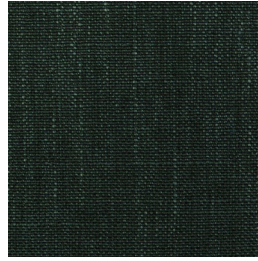
Trinity Duck Egg



Trinity Gunmetal



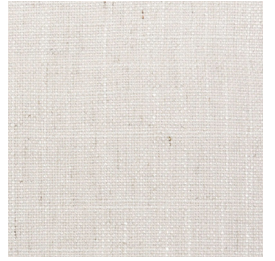
Trinity Hemp



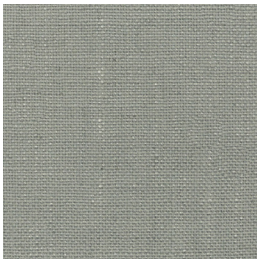
Trinity Hunter



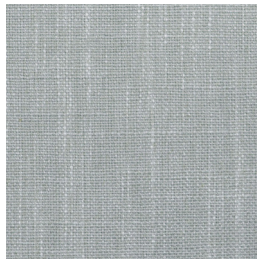
Trinity Mint



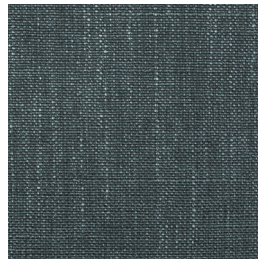
Trinity Parchment



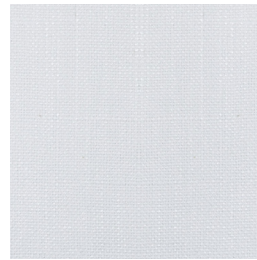
Trinity Parchment



Trinity Silver



Trinity Slate



Trinity Tusk



Trinity Wattle

TRINITY

Specifications

Usage	Heavy Commercial / Drapery
Composition	70% Polyester, 22% Viscose, 8% Linen
Pattern Repeat	Plain
Width	142cm
Railroaded	No
Care Label	8U
Swish	No
Metres on roll (approx.)	45 metres
Price Code	Green
Washable	Yes

Test Results

Abrasion resistance - Martindale (ISO 12947)	150,000 cycles
Seam slippage (ISO 13936-2, Load 180)	Warp: 4.2mm, Weft: 3.4mm
Pilling resistance (ISO 12945-2)	4/5
Colourfastness to light (ISO 105-B02, blue std 6)	5/6
Colourfastness to rubbing (ISO 105-X12:1993)	Dry: 5, Wet: 5
Colourfastness to washing (ISO 105-C06:2010: B1S)	Colour change: 5, Staining Multifibre: 5
Free and hydrolysed formaldehyde (ISO 14184-1:1998)	Not detectable

Fabric may vary in colour due to the nature of the media



131 Metrolink Cct, Campbellfield VIC 3061
P: +61 9357 8807
E: sales@profilefabrics.com.au
www.profilefabrics.com.au
www.swishworldfabrics.com.au

