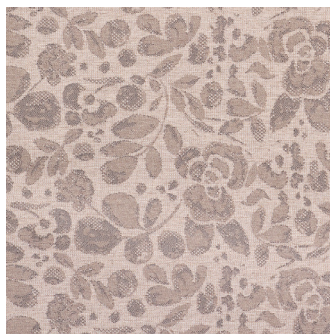
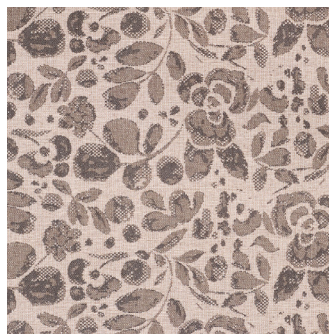


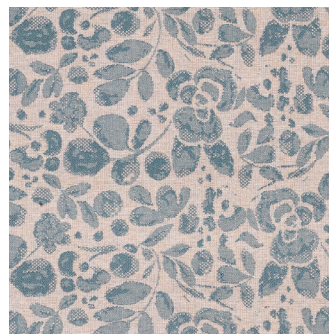
Tusmore Indigo



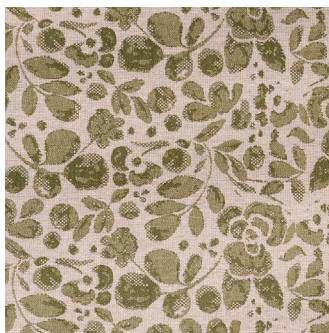
Tusmore Mink



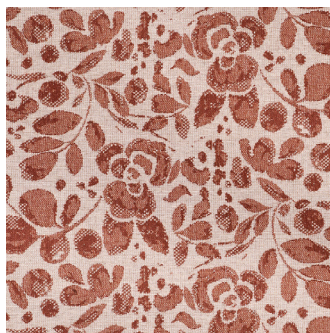
Tusmore Pewter



Tusmore Sky



Tusmore Willow



Tusmore Woodrose

## TUSMORE

### Specifications

Usage	General Domestic
Composition	100% Polyester
Pattern Repeat	V:54cm x H:37cm
Width	150cm
Railroaded	Yes
Care Label	3U
Swish	Yes
Metres on roll (approx.)	45 metres
Price Code	Green

### Test Results

Abrasion resistance - Martindale (ISO 12947)	25,000 cycles
Seam slippage (ISO 13936-2, Load 180)	Warp: 3.7mm, Weft: 4.3mm
Pilling resistance (ISO 12945-2)	5
Colourfastness to light (ISO 105-B02, blue std 6)	Greater than 6
Colourfastness to rubbing (ISO 105-X12:1993)	Dry: 5, Wet: 5
Free and hydrolysed formaldehyde (ISO 14184-1:1998)	Not detectable

Fabric may vary in colour due to the nature of the media