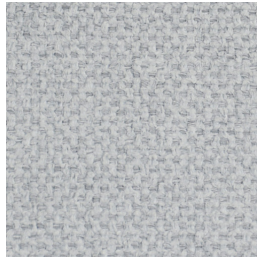
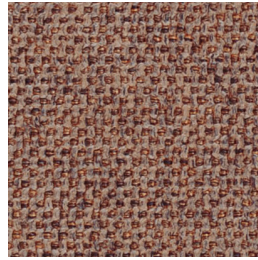


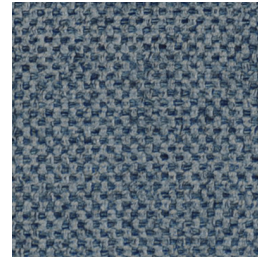
Urban Ash



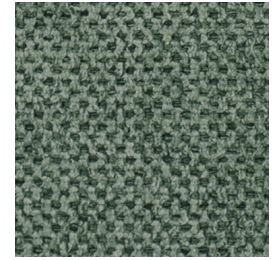
Urban Chrome



Urban Cotta



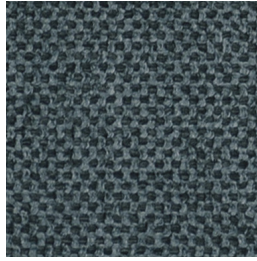
Urban Denim



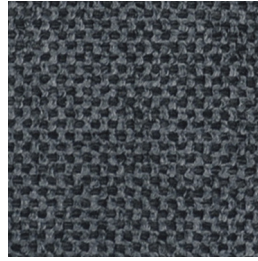
Urban Hedge



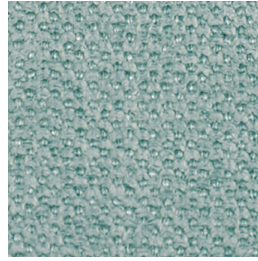
Urban Honey



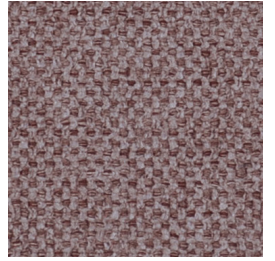
Urban Indigo



Urban Licorice



Urban Mint



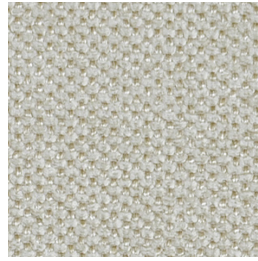
Urban Musk



Urban Oak



Urban Oyster



Urban Parchment

URBAN

Specifications

Usage	Heavy Commercial
Composition	100% Polyester
Pattern Repeat	Plain
Width	140cm
Railroaded	Yes
Care Label	3U
Swish	Yes
Metres on roll (approx.)	45 metres
Price Code	Orange

Test Results

Abrasion resistance - Martindale (ISO 12947)	79,500 cycles
Seam slippage (ISO 13936-2, Load 180)	Warp: 2.8mm, Weft: 4.1mm
Pilling resistance (ISO 12945-2)	5
Colourfastness to light (ISO 105-B02, blue std 6)	5/6
Colourfastness to rubbing (ISO 105-X12:1993)	Dry: 5, Wet: 4/5
Free and hydrolysed formaldehyde (ISO 14184-1:1998)	Not detectable

Fabric may vary in colour due to the nature of the media



131 Metrolink Cct, Campbellfield VIC 3061
P: +61 9357 8807
E: sales@profilefabrics.com.au
www.profilefabrics.com.au
www.swishworldfabrics.com.au

